



THE MEMORIAL COLLECTION

LS

Welcome to our brochure, which has a comprehensive range of memorials for you to choose from. All the memorials in this catalogue are interchangeable, so if you like the style of one, but in the stone colour of another, then that is something we can absolutely do.

We also offer a bespoke service, where our Master Stone Mason will design the perfect memorial for your loved one. If you have an idea of what you would like, he will discuss those ideas with you and advise on shape, fonts and designs.

Inscriptions are usually machine engraved, however with sandstone, limestone and slate materials they can also be hand carved.

Letters and etchings or carvings can be painted or left natural and there are a selection at the rear of this book however we can engrave bespoke designs too.

We have a range of samples for you to view in our showrooms where you can also discuss the kind of memorial you are looking for with one of our experienced sales consultants. Please note, we only use natural stone therefore there may be a very slight difference in the colour from the samples we have as the stone for the memorial will come from a different area of the quarry.

It is important to consider where the memorial is to be situated, as this may influence the type of stone you choose. For instance, granite is a very hard stone and easy to keep clean, however a sandstone or limestone is softer and porous so it may not be suited to being placed under a tree as the tree sap could stain the memorial. Our sales consultants will be happy to discuss this with you.

At the rear of the brochure there are options from our sister company 'Cremcetera' for grave markers. The plaques are made from recycled acrylic and can be fully recycled when they are no longer required. The stakes are also made from 100% recyclable materials. We have only shown a small sample of what is available so please contact us if you wish to have something different as we will be able to make these for you.



The Gainsborough

- Orient Red
- Centre Peon with rounded shoulders and matching base. Centre point can be used for photo plaque or design



The Lavenham

- Blue Pearl
- Centre Peon with square base



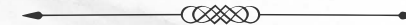
The Polstead

- Millenium Grey
- Centre Peon with a moulded border



The Woodbridge

- Blue Pearl
- Barrel sided memorial with splayed base with integral vases





The Dunwich

- M-13 Dark Grey
- Left sided Anton with chamfered base



The Orford

- Millenium Grey
- Right sided Anton with square base



The Beccles

- Bahama Blue
- Round top with Scotia corners. Top is ideal for photo plaque



The Boxford

- Black
- Traditional Ogee top with Angel etching



The Melford

- Emerald Green
- Trefoil top



The Aldeburgh

- Black
- Ogee top with Scotia shoulders and moulded border



The Bardwell

- Crystal Grey
- Hand carved rope border Ogee



The Cavendish

- Stirling Grey
- Serpentine top







**The Hadleigh**

- Black Galaxy
- Square Top



**The Layham**

- Black
- Ogee with moulded shoulder, full length sides and base



**The Danbury**

- Black
- Round top with Ogee shoulders and stop chamfer



**The Felsted**

- Karin Grey
- Round top with Ogee shoulders



**The Kersey**

- Black
- Ogee top with gilded roses and pin line



**The Dedham**

- Black
- Camber top



**The Thaxted**

- Balmoral Red
- Ogee top with church window



**The Maldon**

- Black
- Ogee top with hand etched book and rose etching





**The Writtle**

- South African Dark Grey
- Round top memorial on check and bow base



**The Borley**

- Black
- Etched book with shaped pages and rose design on Ogee top memorial



**The Wivenhoe**

- Stirling Grey
- Contrasting natural rustic border. Round top with Scotia shoulders



**The Ongar**

- Stirling Grey
- Round top memorial with contrasting natural rustic border and edges, with matching double bases



**The Tollesbury**

- Black
- Contrasting natural rustic border, edges and matching base. Ogee top



**The Langham**

- Royal Green
- Rustic edges and matching base



**The Ashdon**

- Millennium Grey
- Hand carved daffodils on memorial with splay shoulders



**The Somerton**

- Blue Pearl
- Centre Peon top and hand carved flowers around a heart





The Tillingham

- Black
- Barrel side memorial with carved roses



The Wakefield

- Yorkstone
- Deep carved flowers in round top memorial with Ogee shoulders



The Purleigh

- Nabrasina
- Classic Ogee top memorial



The Leigh

- Black
- Gates of Heaven memorial



The Latchingdon

- Carrera Marble
- Ogee top with carved flower design detail



The Finchingfield

- Yorkstone
- Peon top with moulded borders



The Gosfield

- Royal Green
- Celtic cross detail



The Kirby

- Black Slate
- Gothic top







The Lawford

- Celtic Limestone
- Camber top with flower and butterfly design



The Wakeham

- Portland stone
- Checked top memorial



The Minsmere

- South African Dark Grey
- Gothic style memorial with chamfers and hand carved roses



The Mistley

- Black
- Round top memorial with Ogee shoulders



The Crosland

- Yorkstone
- Scroll shaped top with roses and cross



The Kingston

- Purbeck
- Ogee top memorial with rustic sides



The Osea

- Arctic Grey
- Camber top memorial with raised panel and antique finished carved roses



The Pebmarsh

- Bahama Blue
- Two horses carved around a heart memorial





The Otley

- South African Dark Grey
- A hand carved flowers in a recessed border with round top



The Shelley

- Bahama Blue
- Celtic Cross hand carved into the memorial with pitched edges



The Nayland

- Surf Grey
- Traditional Camber top with moulded edges



The Bulmer

- Honed black
- Traditional camber top with hand carved daffodils and curved shape base



The Stisted

- Khammam Ebony Black
- Half Ogee with tapering chamfers



The Cobblestone

- Tropical Green
- Shaped to resemble a pebble off the beach



The Bures

- Blue Pearl
- Traditional Ogee top with rustic edged base and carved daffodils to the side



The Feering

- Truro Grey
- Classic wheel Celtic cross with rustic detail







**The Raydon**

- Truro Grey
- Tall classic rustic wheel Celtic cross



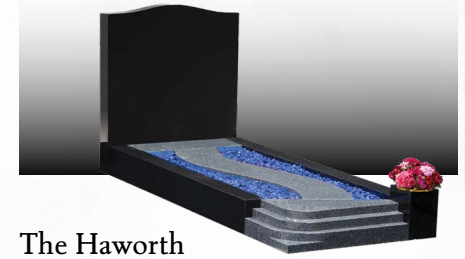
**The Southwold**

- Rich Bahama Blue
- Book memorial in kerb set with coverslab



**The Hallingbury**

- M13 Dark Grey 4" x 4" kerbs
- Triple heart with chamfered side kerbs and splay foot kerb with corner posts



**The Haworth**

- Indian Red
- Ogee shaped memorial with steps and pathway to heaven which can be inscribed



**The Chelsworth**

- Sesame
- Classic shaped memorial with a cover slab



**The Hedingham**

- Black 4" x 4" kerbs
- Classic Ogee top memorial and kerbs



**The Holmfirth**

- Blue Pearl
- Book with shaped pages and scroll edges on book and tassel splayed base



**The Hebden**

- Black
- Raised book memorial with integrated square vase





The Holme

- Indian Red
- Shaped page book memorial with hand carved rose detail



The Denby

- Black
- Classic book set with second base allowing for further inscription



The Alton

- South African Dark Grey
- Book memorial with cord and tassel



The Ardleigh

- Black
- Book shaped memorial with splayed base and canopy with cord and tassel



The Denholme

- South African Dark Grey
- Shaped page book with cord and tassel. High rests allowing for flower container



The Digley

- Stirling Grey
- Shaped book memorial with wedge rests



The Abberton

- Blue Pearl
- Ogee top headstone giving book appearance with cord and tassel



The Hanningfield

- Black
- Classic book with scotia shoulders, and cord and tassel





The Filey

- Black granite with Blue Pearl spine
- Alternative book memorial. The spine can be in any different colour granite



The Scarborough

- Black
- Heart memorial with two small hearts for photo plaque or inscription



The Stambourne

- Black
- Curved book kerb set



The Stowe

- Black
- Heart shaped memorial on large base



The Hullbridge

- Blue Pearl
- Heart shaped memorial with three carved roses



The Ballingdon

- Black
- Heart memorial with shaped shoulders



The Steeple

- Royal Green
- Heart memorial with two carved roses on desk wedge



The Tiptree

- Pearl Grey
- Upright memorial with integrated vase to the front







**The Dunmow**

- Opal Pink
- Curved book memorial with unpolished cord and tassel



**The Mersea**

- Blue Pearl
- Serpentine top memorial with desk wedge



**The Elmswell**

- Blue Pearl
- Scroll detail wedge memorial



**The Middleton**

- Black
- Flat tablet with carved book



**The Brightlingsea**

- Black
- Upright ogee memorial with integrated vase to the side



**The Coddendam**

- Black
- Upright memorial tablet with splay corners



**The Glemsford**

- Black
- Tablet with pin line, rose design and flower container



**The Hepworth**

- Black
- Tablet with gold border





**The Ingham**

- Stirling Grey
- Desk Wedge with moulded border



**The Milden**

- South African Dark Grey
- Desk wedge tablet memorial



**The Pinewood**

- Bahama Blue
- Book memorial on rest with carved turned page and rounded binder spine



**The Crossing**

- South African Dark Grey
- Ogee top with carved book which has shaped pages, carved cord and tassel and rose design



**The Lindsey**

- Millennium grey
- Flat tablet with book outline



**The Sudbury**

- Khammam Ebony Black
- Shaped topped memorial with flowers hand carved in relief either side of a heart



**The Farnham**

- Khammam Ebony Black
- Book memorial with square top, two vases and heart tablet in the centre of the base



**The Maplestead**

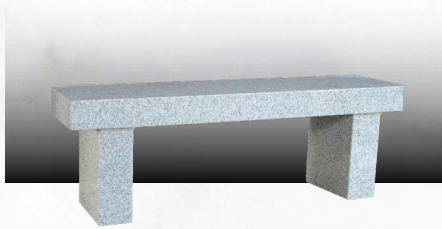
- Khammam Ebony Black
- Double heart memorial with gilded outlines





**The Yeldham**

- Khammam Ebony Black
- With raised interlocking hearts framed with a gilded pin line



**B1**

- Surf Grey
- An elegant, simple three piece bench



**V2**

- Indian Red
- Heart shaped vase with raised detail



**V3**

- Stirling Grey
- Heart shaped vase



**B2**

- Bahama Blue
- Six piece curved edge and sloping legs form this bench for reflection



**V1**

- Millenium Grey
- Turned vase



**V4**

- Blue Pearl
- Check top vase with base



**V5**

- Millenium Grey
- Vase with etched heart detail







V6

- Crystal Grey
- Traditional square vase



V7

- Khamman Black
- Square vase with chamfered top edges



The Daisy

- Pearl Grey
- Camber top memorial with Scotia shoulders featuring guardian angel watching over sleeping child



The Rosemary

- Ogee memorial with sleeping baby reflection through a window



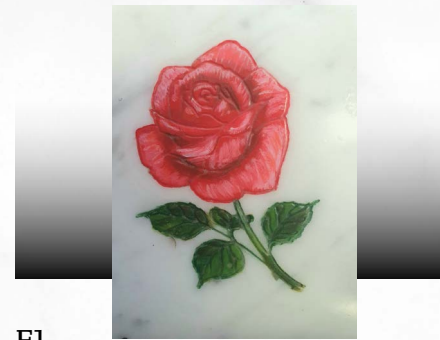
V8

- South African Dark Grey
- With raised heart shape for a further inscription



The Dandelion

- ET147 Childs memorial with fairy etching



E1

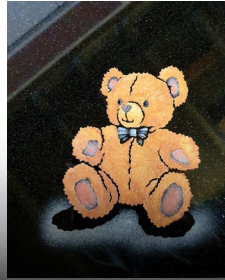
- Hand painted Rose on marble



E2

- Hand painted Fuscia





E3

- 
- Gilded horse design

E4

- 
- Painted teddy bear design

E7

- 
- A Wren

E8

- 
- Flower bouquet of your choice



E5

- 
- Painted Robin

E6

- 
- Etched Bee



E9

- 
- Standard Rose 1.  
Rose can be painted any colour, left as an outline or the whole thing can be gilded



E10

- 
- Standard Rose 2.  
Roses can be painted any colour, left as an outline or the whole thing can be gilded





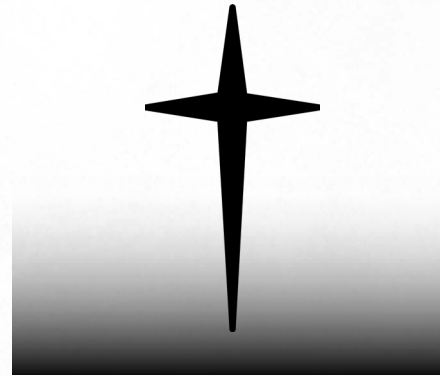
E11

- Daffodils.  
Can be painted or left as an outline or the whole thing can be gilded



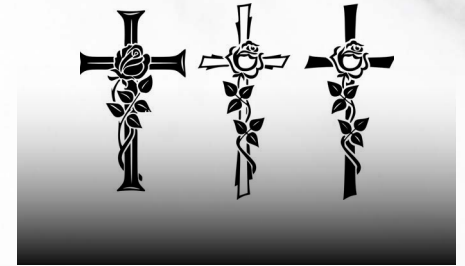
E12

- Butterfly



E15

- Cross star



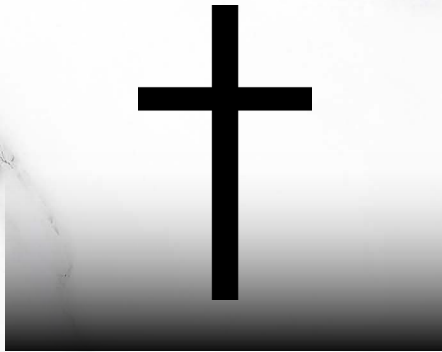
E16

- Cross and rose design options



E13

- Cross Serif



E14

- Cross Standard



E17

- Ears of corn



E18

- Wheat





Bespoke designs can be made,  
the price of these will depend on  
the complexity of the drawing



E19

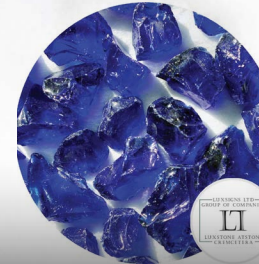
- Dove of Piece

Photo Plaques

- Photo plaques come in various shapes and sizes
- With or without frames

- A = Silver
- B = Gold Leaf
- C = Cream
- D = Grey
- E = Gold Paint
- F = White

- Emerald chippings



Machine engraved letters are on the left hand side, hand carved letters are right hand side (however you feel is best to indicate which is which, on the photo itself or underneath

- A = Mid-Brown
- B = Deep Blue
- C = Mid-Grey
- D = Black

- Cobalt Blue

- White Aspen

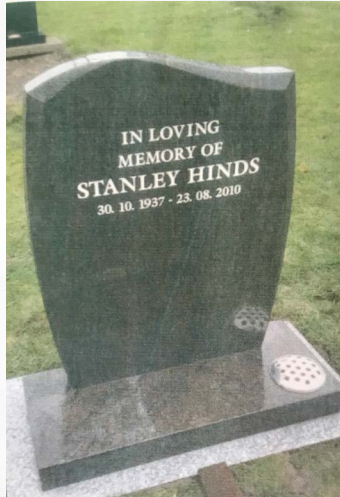


Other services

Additional inscriptions

Often, family members will leave space for further inscriptions to be added later. When the time has come, we can add the inscriptions to the existing stone. If we made the original memorial, we should have all the information to be able to match the inscription perfectly. If we didn't make the original, we have experienced stone masons who can identify which font has been used and every effort is made to match the inscription to the original.

Depending on where the existing memorial is sited, if there is access for our equipment it may be possible for the additional inscription to be machine engraved onsite. If this is not possible, we will remove the memorial to our workshop and refix the memorial when the new inscription is complete. For hand carved additional inscriptions we would normally remove the memorial to have the carving done at the workshop and refix afterwards.



AP/535BWST

• Silver granite

Other colours are available



AP535GRW/ST



AP535/BW/HFH





## Cleaning

Memorials naturally can become dirty as they are outside and open to the elements. We offer a cleaning service which can be an annual or two yearly regular clean, or you can just contact us as and when you feel you would like the memorial to be cleaned. Below are some 'before and after' examples.



## Renovations

We also renovate memorials where they have become loose or dilapidated over time. Our experienced stone masons will view the memorial and will report on the work that needs completing to bring the memorial back to as near new as possible.

